

**Manufacturer of Concrete Batching, Mining, & Quarrying, Blending & Asphalt Equipment**



**Gunlake Silverwater Plant**



**Allied NZ Plant**

**All CMQ conveyors have:**

- » sealed bearings requiring minimum maintenance.
- » a unique designed inclined troughing roller and return roller system which fits standard troughing frames.
- » 30mm gap between roller and frame, eliminating rock jamming.



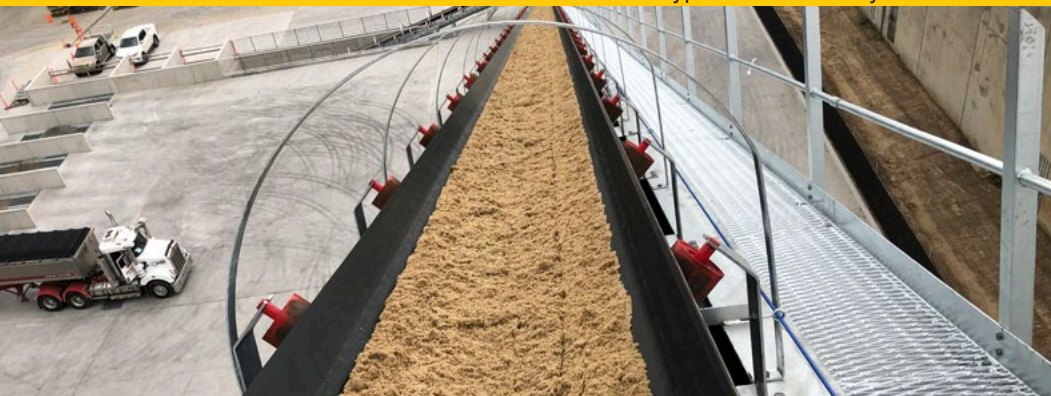
**Ceramic impregnated head drum: eliminates belt slippage and greatly increases the life of the rubber lagging on the head drum**



**CMQ special screw take up where take up thread is not exposed to the elements. Used on conveyors less than 30M long.**



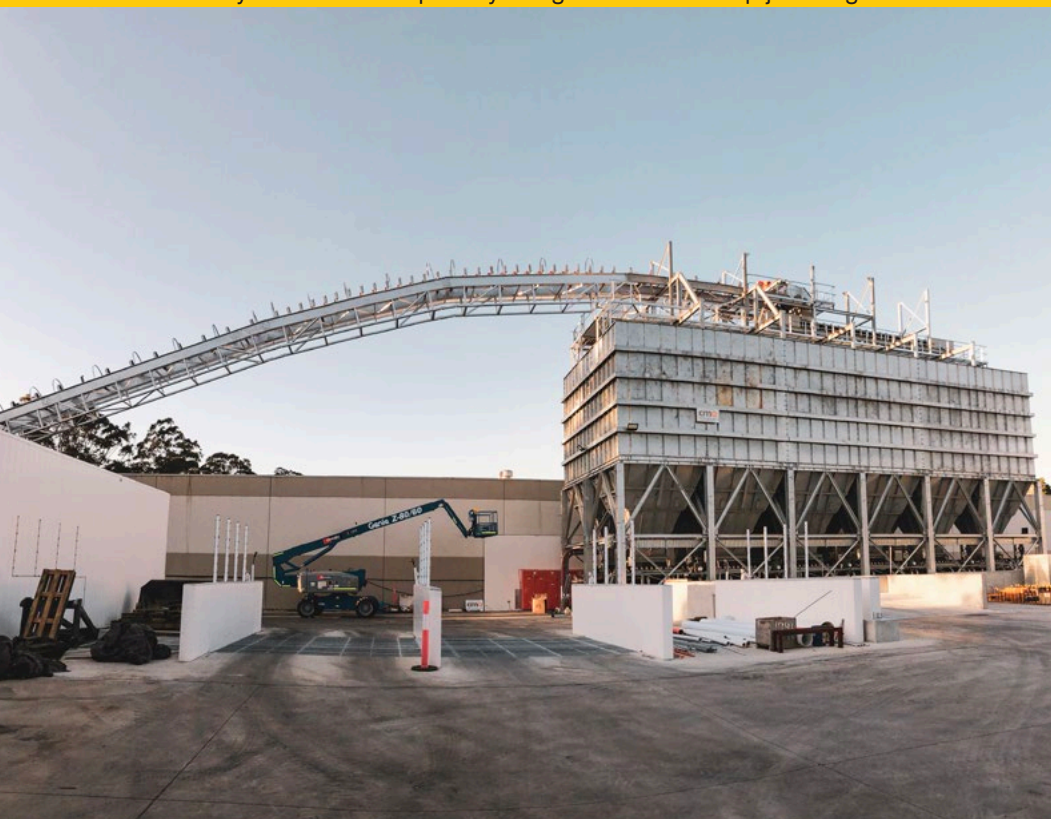
Typical CMQ conveyors



Transfer conveyor with CMQ's specially designed rollers to stop jamming from rocks



Covered conveyors



Large single span transfer conveyor



High capacity transfer conveyor